

IFDM

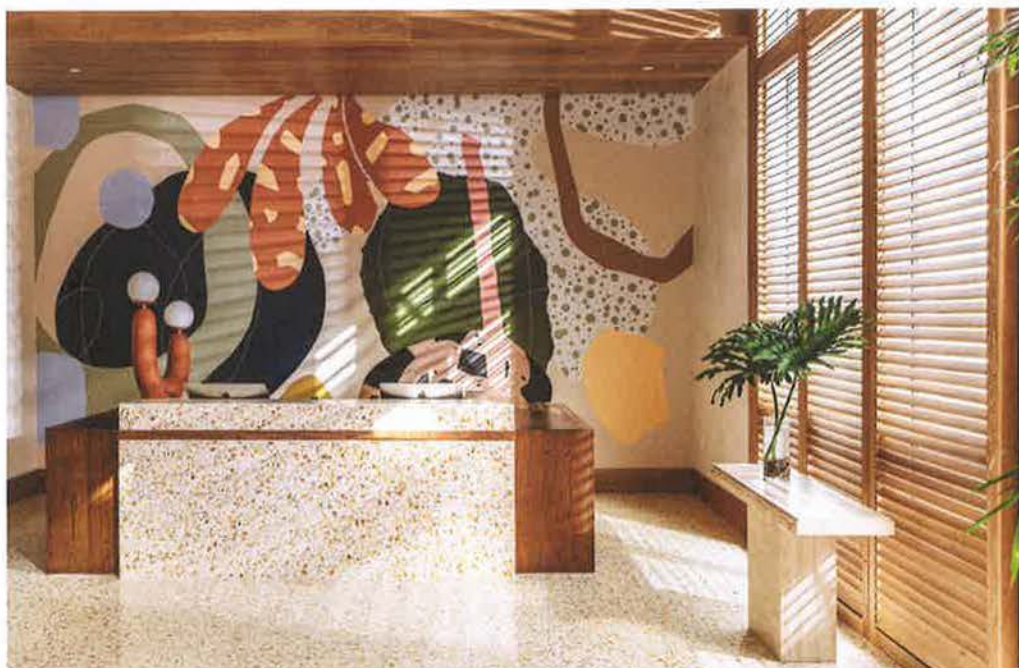
.Wonder
COLLECTIBLE BOOK

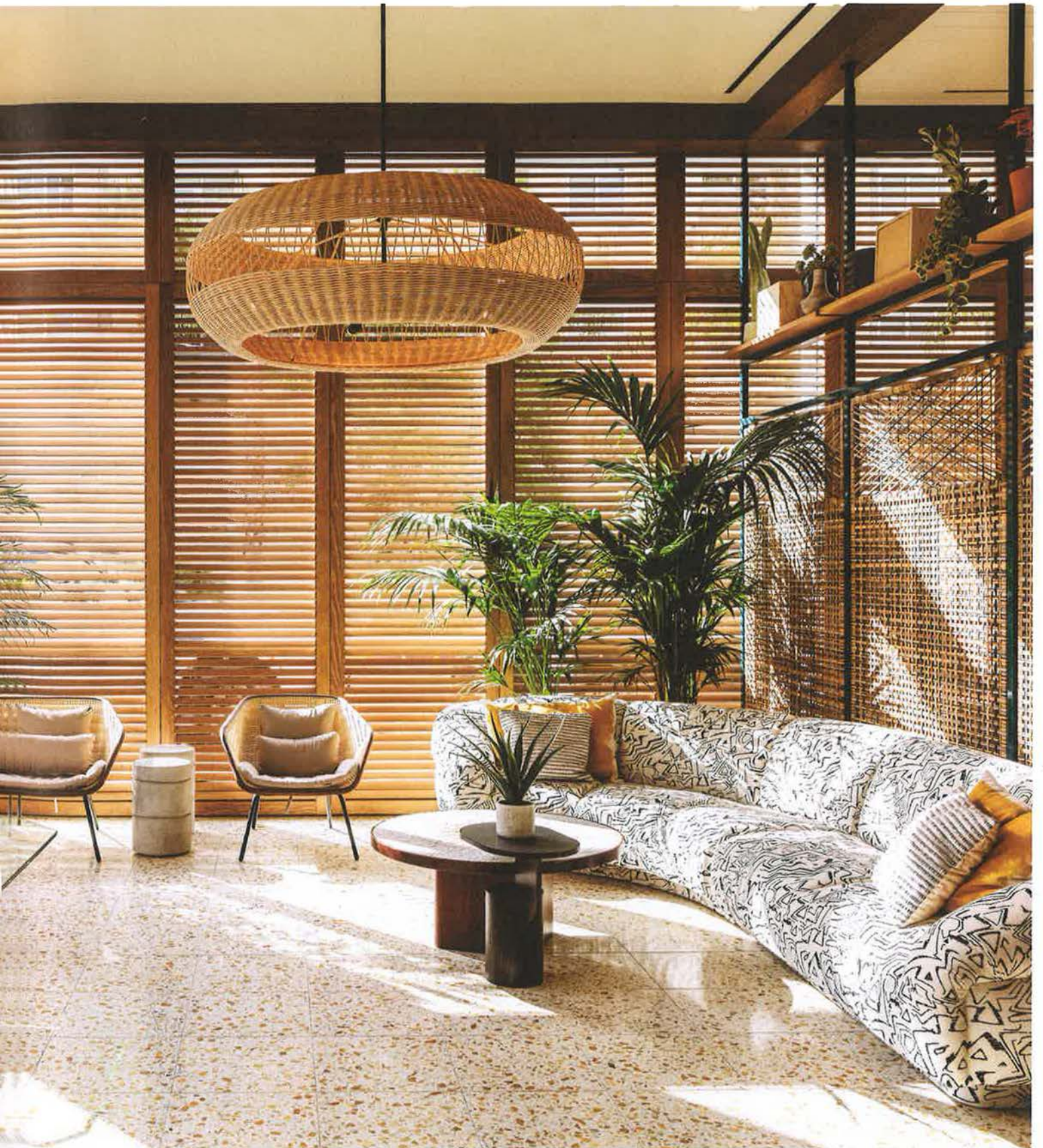
California vibes, from top to bottom

With a hint of the past and an aesthetic sensibility that evokes the spirit of the Westside, Design Collective transforms **Hotel June** into a relaxing, engaging experience thanks to collaboration with local creatives, artists and artisans. A new chapter for Proper Hospitality in Los Angeles

Inside a building from the 1960s, not far from Silicon Beach and the picturesque coast, Hotel June is a perfect blend of past and present, in decorative alignment that combines Mid-Century modernist nostalgia with 'seaside culture.' While the façades by the legendary architect Welton Becket remain almost intact, the team of Design Collective has updated the interiors, bringing

a relaxed, luminous West Coast atmosphere with pale natural wood, local fabrics, handpainted tiles, custom furnishings, works of local art and crafts. Hotel June is steeped in inviting design, densely layered yet never oppressive, precisely because it is based on a luminous, contemporary schema, an essential aesthetic that finds interesting interactions and a balanced use of color. The hotel hall,







Client/Owner: Brian De Lowe and Brad Korzen
 Hotel operator: Proper Hospitality
 Architect of Record: kollin | allomare | architects
 Landscape Design and Installation:
 Terremoto, LA, Real Natives
 Interior design: **Studio Collective**
 General Contractor Public Areas:
 Reaume Richardson Builders

Furnishings and accessories (indoor/outdoor): custom designed, sourced or vintage repurposed by **Studio Collective**; Agave Designs, Fil Doux, Giubani Artisanal, Hern, Industry West, Kravet, Malibu Market, Max Lamb, Mohd Furniture, Pindler, Opuzen, Teak Warehouse, The Workshop Co-Op, Valley Forge, Very Good & Proper & Another Country, Worthington Direct

Lightings: custom by **Studio Collective** (fabricated by Ashley Lighting); Aetelier Vime, Brendan Ravenhill, Colonel, Danish Design Store, Marset, No Mas!, Pop and Scott, Rich Brilliant Willing, Serena & Lily
 Fabrics, flooring and carpets: custom by **Studio Collective**; Bolon, Couristan Custom Carpets, Fliterman Collection, Opuzen, Sunbrella/Silver State;
 Guestroom Sisal-look carpeting by Design Materials
 Murals and Artworks: Alex Proba, Eaton Fine Art and TS + Associates, The Los Angeles River
 Custom millwork and wood shutter system:
 Agave Designs

Branding & Visual Identity: Italic Studio

Author: Antonella Mazzola

Photo credits: The Ingalls



with its lounge and restaurant open all day, is a warm, airy space that contains workshops, performances, talks, tastings and live music. Flooring in mustard-color composite envelops part of the reception counter. The ceiling is clad in wood, vibrant light enters through the strips of the omnipresent Venetian blinds, and an abstract mural by the artist from Brooklyn, Alex Proba, completes the setting. The repertoire of furnishings and complements – mostly by Design Collective, but also commissioned to local artists and artisans – takes form in the contrast between contemporary and vintage items, in line with the creative Westside spirit. The breezy Caravan Swim Club is the restaurant on two levels that serves up cuisine and a bar menu inspired by Baja California. Permeated by the same amber light regulated by the blinds, its interiors feature wood and partitions, but also a green hue for the quartzite top, glazed terracotta tiles and metal details. The set-up of the Caravan Swim Club extends outside, creating a gathering place by the pool, on a lush terrace that offers teak cots and a well-stocked bar.



The facility contains 250 rooms, divided by categories, all spacious and with various views of the ocean or the city. The white walls and the floors in natural sisal-look fiber form a backdrop for a selection of furnishings that blends modernism and more contemporary styling, like the Hem sofas, the custom cabinets by Jay Edwards, the oak beds and the lamps produced by Ashley Lighting. The suites on the upper levels indulge more fully in chromatic contrasts, with bright blue and gray, and carpets with black and white graphic effects. The ceramic tiles fill the showers with shades of marine blue.

